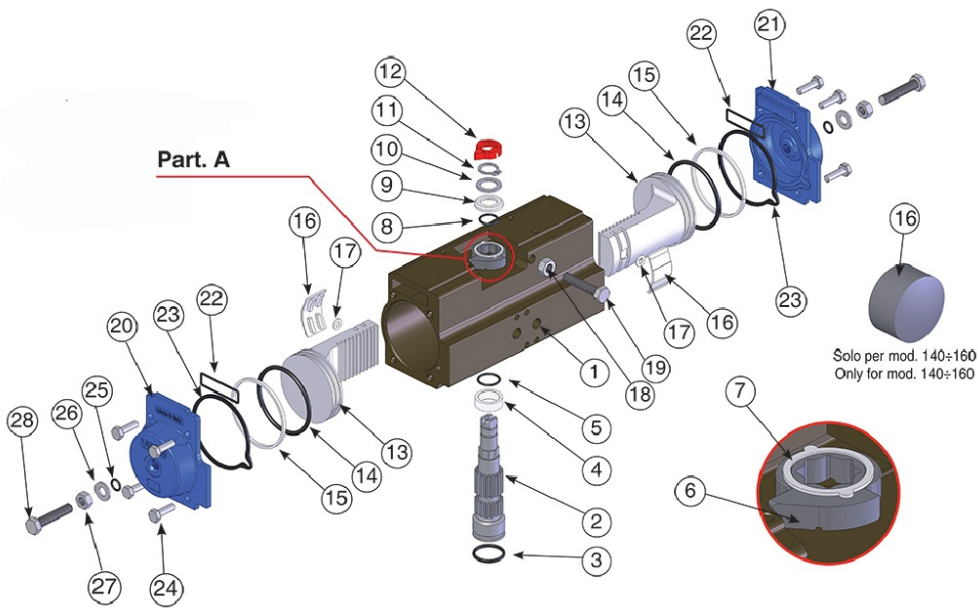
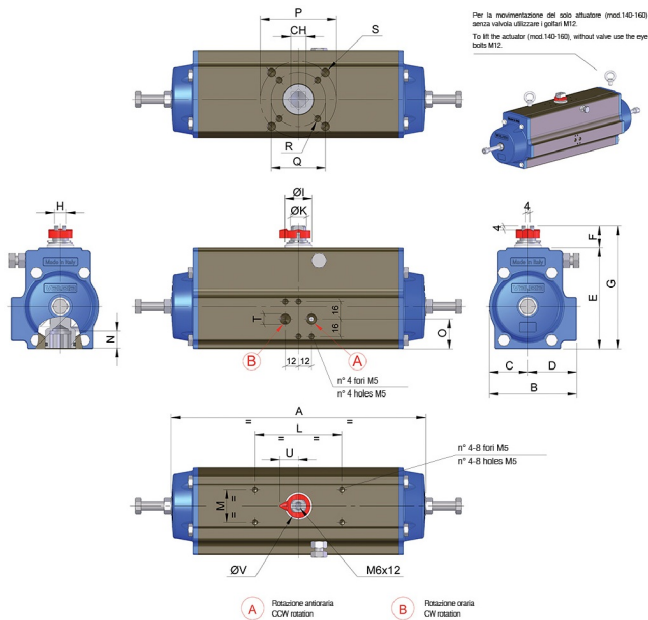


MOD. 140



Technical specifications





| POSITION | PART NAME | MATERIAL | TREATMENT | N.° PIECES |
|----------|-------------------------|---------------------------------------|---------------|------------|
| 1 | Body | Extruded aluminium | Hard anodized | 1 |
| 2 | Anti-blowout pinion | Steel | Nickel plated | 1 |
| • 3 | O-ring | NBR/SILICONE/FKM | - | 1 |
| • 4 | Spacer ring | POM-AMODEL-STANYL | - | 1 |
| • 5 | O-ring | NBR/SILICONE/FKM | - | 1 |
| 6 | Cam | Stainless steel | - | 1 |
| 7 | Spacer | POM-MINLON-PTFE | - | 1 |
| • 8 | O-ring | NBR/SILICONE/FKM | - | 1 |
| • 9 | Spacer | POM-MINLON-PTFE | - | 1 |
| 10 | Washer | Stainless steel | - | 1 |
| **11 | Snap ring | Steel | Nickel plated | 1 |
| 12 | Position indicator | Thermoplastic rubber TPE | - | 1 |
| 13 | Piston | Die cast aluminium | - | 2 |
| • 14 | O-ring | NBR/SILICONE/FKM | - | 2 |
| • 15 | Antifriction ring | POM-AMODEL-STANYL-PTFE | - | 2 |
| • 16 | Thrust block | POM-AMODEL-STANYL-DELRIN+MOS2 | - | 2 [4] |
| 17 | Washer | Stainless steel | - | 2 [0] |
| 18 | Stop bolt retaining nut | Stainless steel | - | 1 |
| 19 | Stop bolt | Stainless steel | - | 1 |
| 20 | Left end cap | Die cast aluminium | Painted | 1 |
| 21 | Right end cap | Die cast aluminium | Painted | 1 |
| 22 | O-ring | NBR/SILICONE/FKM | - | 2 |
| 23 | End cap seats | NBR/SANTOPRENE/SILICONE/FKM/ME0020-70 | - | 2 |
| 24 | End cap fixing screw | Stainless steel | - | 8 |
| • 25 | O-ring | NBR/SILICONE/FKM | - | 2 |
| 26 | Washer | Stainless steel | - | 2 |
| 27 | Stop bolt retaining nut | Stainless steel | - | 2 |
| 28 | Stop bolt | Stainless steel | - | 2 |

• Parts subject to wear

** Reinforced series DIN 471-UNI 7436 Valid for mod. 140-160 only.

| MOD | FORATURA DRILLING ISO 5211 | CH | A | B | C | D | E | F | G | H | ØI | ØK | L | M | N | O | P | Q | R | S | T | U | ØV | Z(MAX) |
|----------|----------------------------|----|-----|-----|------|------|-----|----|-----|----|----|----|--------|----|----|----|-----|-----|--------|--------|------|----|----|--------|
| MOD. 140 | F10 - F12 | 27 | 610 | 164 | 76,5 | 87,5 | 197 | 30 | 227 | 24 | 49 | 35 | 80/130 | 30 | 29 | 71 | 125 | 102 | M10X15 | M12X18 | 1/4" | 32 | 44 | 795 |

Applications



FOOD &
BEVERAGE



HVAC



PULP & PAPER



PAINTS &
SOLVENTS



WATER
TREATMENT



CHEMICAL



OEM



OIL & GAS