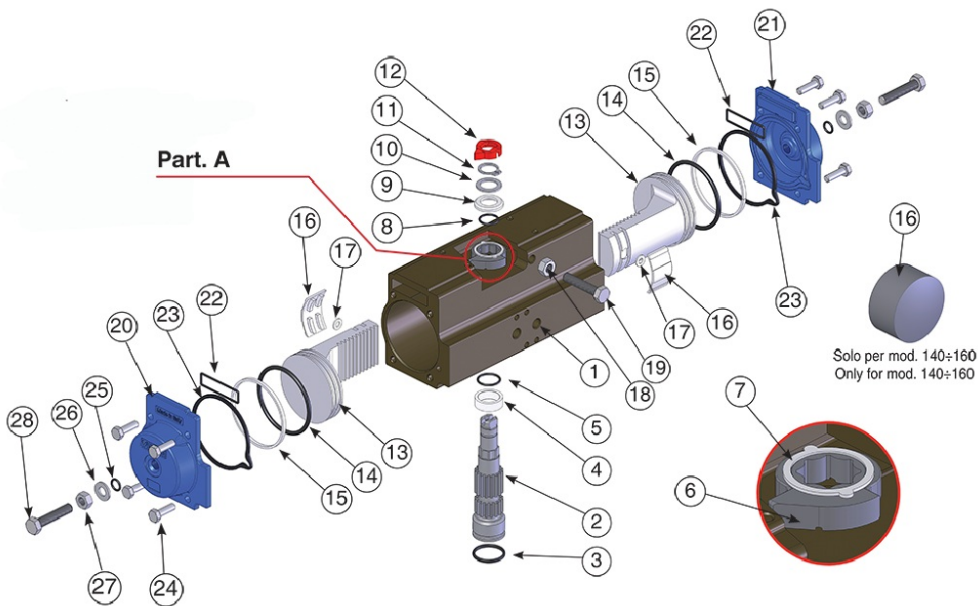
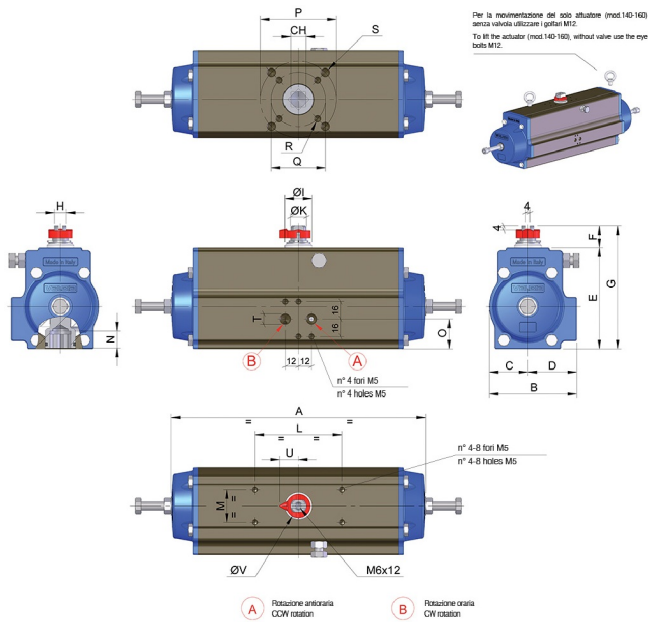


MOD. 140



Technische Spezifikationen





POSITION	TEILNAME	MATERIAL	TREATMENT	NR. STÜCK
1	Body	Extruded aluminium	Hard anodized	1
2	Anti-blowout pinion	Steel	Nickel plated	1
• 3	O-ring	NBR/SILICONE/FKM	-	1
• 4	Spacer ring	POM-AMODEL-STANYL	-	1
• 5	O-ring	NBR/SILICONE/FKM	-	1
6	Cam	Stainless steel	-	1
7	Spacer	POM-MINLON-PTFE	-	1
• 8	O-ring	NBR/SILICONE/FKM	-	1
• 9	Spacer	POM-MINLON-PTFE	-	1
10	Washer	Stainless steel	-	1
**11	Snap ring	Steel	Nickel plated	1
12	Position indicator	Thermoplastic rubber TPE	-	1
13	Piston	Die cast aluminium	-	2
• 14	O-ring	NBR/SILICONE/FKM	-	2
• 15	Antifriction ring	POM-AMODEL-STANYL-PTFE	-	2
• 16	Thrust block	POM-AMODEL-STANYL-DELRIN+MOS2	-	2 [4]
17	Washer	Stainless steel	-	2 [0]
18	Stop bolt retaining nut	Stainless steel	-	1
19	Stop bolt	Stainless steel	-	1
20	Left end cap	Die cast aluminium	Painted	1
21	Right end cap	Die cast aluminium	Painted	1
22	O-ring	NBR/SILICONE/FKM	-	2
23	End cap seats	NBR/SANTOPRENE/SILICONE/FKM/ME0020-70	-	2
24	End cap fixing screw	Stainless steel	-	8
• 25	O-ring	NBR/SILICONE/FKM	-	2
26	Washer	Stainless steel	-	2
27	Stop bolt retaining nut	Stainless steel	-	2
28	Stop bolt	Stainless steel	-	2

• Parts subject to wear

** Reinforcedseries DIN 471-UNI 7436 Valid for mod. 140-160 only.

MOD	FORATURA DRILLING ISO 5211	CH	A	B	C	D	E	F	G	H	ØI	ØK	L	M	N	O	P	Q	R	S	T	U	ØV	Z(MAX)
MOD. 140	F10 - F12	27	610	164	76,5	87,5	197	30	227	24	49	35	80/130	30	29	71	125	102	M10X15	M12X18	1/4"	32	44	795

Anwendungen



FOOD &
BEVERAGE



HVAC



PULP & PAPER



PAINTS &
SOLVENTS



WATER
TREATMENT



CHEMICAL



OEM



OIL & GAS